

A new Lidl for Littleborough



Have Your Say

We have recently submitted a planning application to Rochdale Metropolitan Borough Council for a new Lidl store and associated works including parking and landscaping, at the site occupied by Carlisle Interconnect Technologies (CIT) on Stockton Street, Littleborough, OL15 8YJ.

We would like to invite you to comment on the submitted proposal which has been registered under planning application reference number 18/00059/FUL.

Please see below for details on how to submit your comments.

Site Background

The application site is located at the junction of Stockton Street, a cul-de-sac serving Littleborough Trading Estate which is accessed off Church Street (A58). The site currently comprises warehouses occupied by Carlisle Interconnect Technologies. The site extends to 0.96 ha and is L-shaped.

To the north, the site is bound by warehousing, to the east by FedEx, and to the west by Littleborough Health Centre. To the south, landscaping is located adjacent to the eastern boundary. To the west, the site adjoins Littleborough Group Practice and Health Centre and car park. To the south, the site is bound by two semi-detached dwellings.

The site is situated within easy walking distance of Littleborough Town Centre.

The Proposal

Lidl propose to develop a new store on the site, which will feature an attractive, single storey glazed frontage oriented towards the junction of Church Street and Stockton Street. The new store will extend to 1,876 sq. meters gross external area, with a net retail sales area of 1,104 sq. meters. The new store will feature a dedicated in-store bakery close to the main entrance. The delivery bay will be located adjacent to the north-west elevation of the store.

Access will be taken from Stockton Street alongside the site's southern boundary. The car park will provide 124 no. parking spaces including 7 disabled spaces, 8 parent and child spaces, along with secure cycle parking under the store entrance canopy. In addition, there will be 4 motorcycle parking spaces.

Dedicated pedestrian access will be provided to the shop from the south of the site, giving direct access to the store entrance via a zebra crossing within the car park. Bicycle parking will be provided under the entrance canopy on the southern elevation, close to the store entrance and pedestrian access route.

It is proposed that the store will be open between the hours of:

- 8am to 10pm Monday to Saturday (including Bank Holidays); and
- 10am to 4pm Sunday.

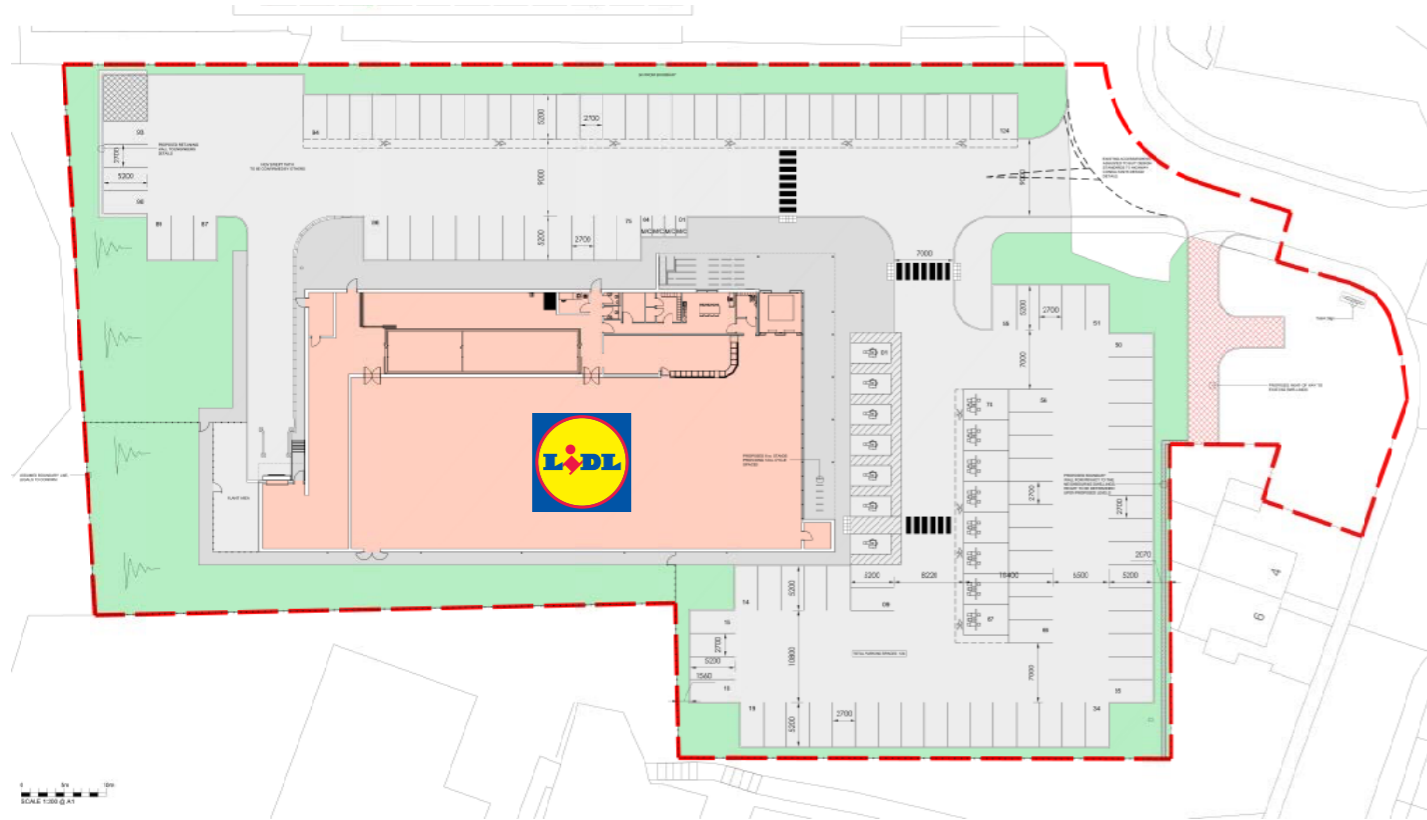
Normally there will be a maximum of two HGV deliveries to the store per day. All store waste will be collected at the same time as the deliveries, therefore minimising HGV movements within the site.

Benefits of the Proposed Development

The new Lidl store will provide the following benefits to the local area:

- Improved shopping choice and provision of a new mainstream discount retail operator for Littleborough;
- A brand new store that will provide a clean and fresh shopping experience to meet the needs of customers;
- A dedicated in-store bakery;
- A contemporary building design that will complement the surrounding area; and
- Employment opportunities for local residents.

Site Plan



Have Your Say

The planning application has now been validated and can be viewed on the Council's Public Access website using the following reference number **18/00059/FUL**
<http://publicaccess.rochdale.gov.uk/online-applications/>

You can also write to Rochdale Metropolitan Borough Council using the following email address: **development.management@rochdale.gov.uk**

Please include the planning application reference number **18/00059/FUL** in the subject of your correspondence. The Case Officer at the Council dealing with the application is David Allen, please mark all correspondence for his attention.

Alternatively, if you would prefer to submit your comments by post, please write to the Council using the following address:

Rochdale Metropolitan Borough Council
Planning Department
Number One Riverside
Smith Street
Rochdale
OL16 1XU

Your comments on our proposal can be submitted by **7th March 2018**, which marks the end of the statutory consultation period for the planning application.

Further details in relation to the proposed scheme can be found on our dedicated website.
<https://rapleys.com/consultation/lidlittleborough>

We Value Your Views

At Lidl we know our success depends on the people we work with and the people who choose to shop with us. We recognise that providing high quality products at industry leading prices is only part of the story; the environment in which our customers do their shopping completes the experience.

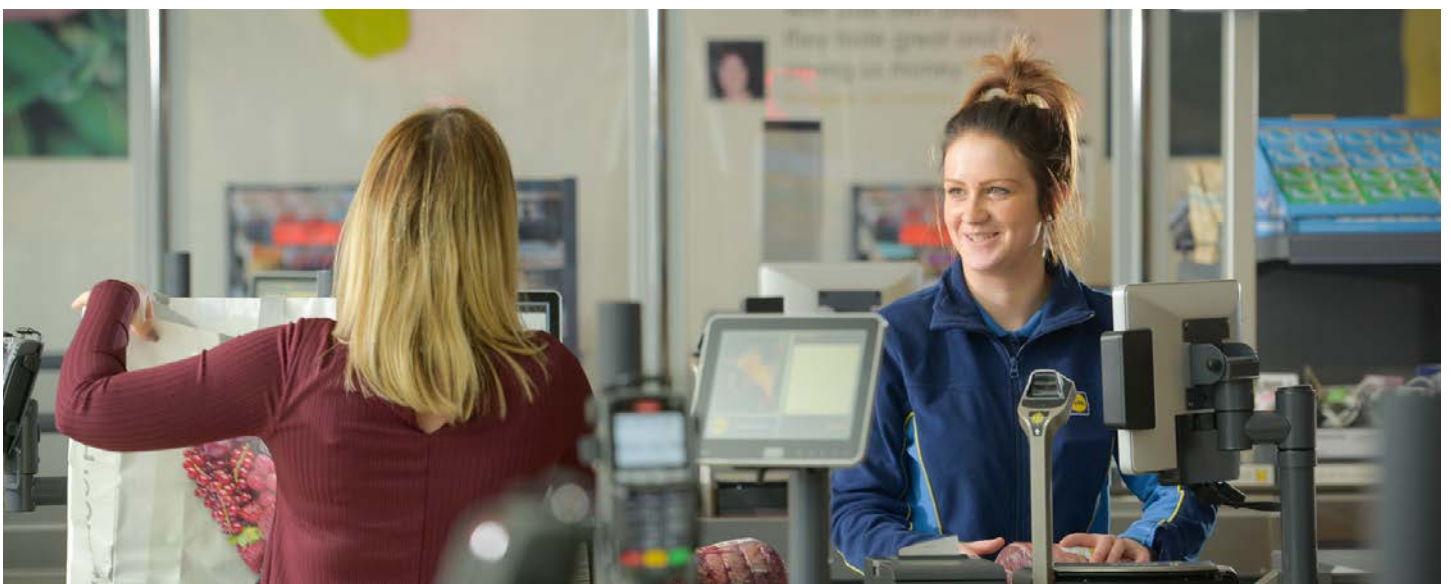


About Lidl

We opened our first Lidl supermarket in Germany in 1973. Following positive customer feedback, we quickly expanded and by the 1980s, Lidl had become a household name.

Our first Lidl in the UK opened in 1994 and we now have over 670 stores across Britain.

Lidl takes pride in providing top quality products at the lowest prices. Our stores are operated by a network of dedicated store staff, helping to establish and develop the success of the company.



#LidlSurprises

