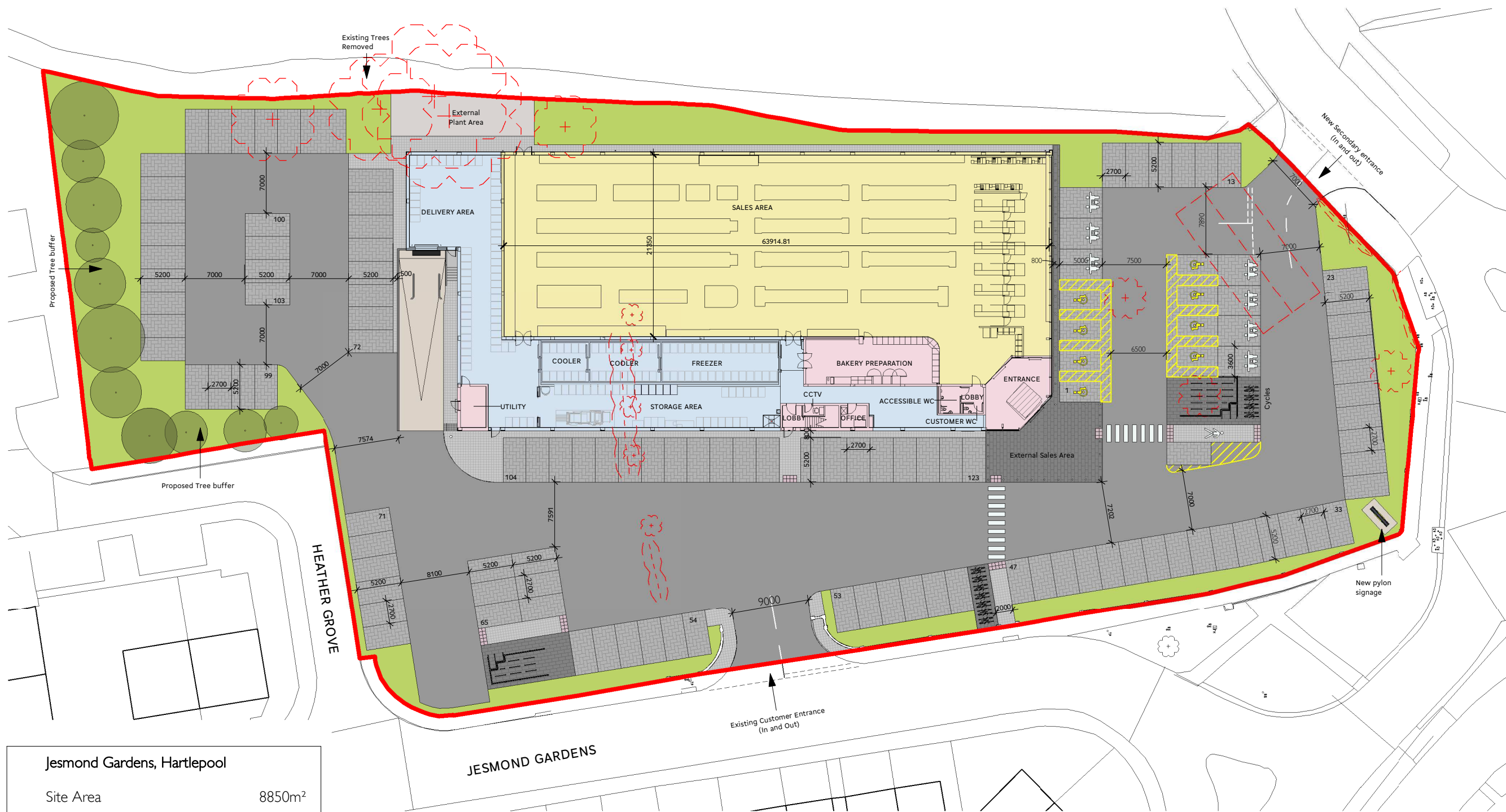


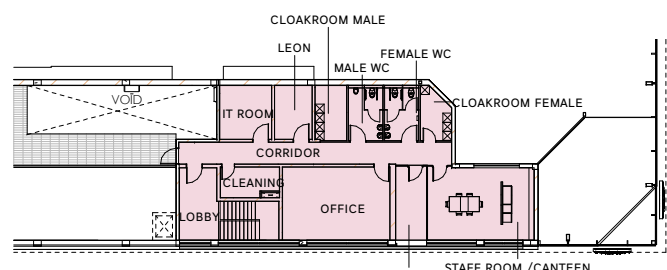
Revision	Drawn By	Checked By	Date
1	PAC	DWW	04.05.16
2	DWW	KDH	05.05.16
3	PAC	DWW	12.05.16
4	PAC	DWW	10.06.16
5	KDH	JCH	11.08.16
6	JWM	KDH	15.08.16



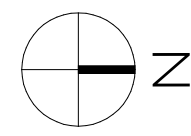
Jesmond Gardens, Hartlepool

Site Area	8850m ²
Ground Floor GIA	2262m ²
First Floor GIA	237m ²
Total GIA	2499m ²
Total GEA	2347m ²
Sales Area	1459m ²
Warehouse Area	667m ²
Ancillary Area GF	221m ²
Ancillary Area FF	200m ²
External Sales Area	95m ²
Aisles	5
Car Parking Spaces (Standard spaces 2.7x5.2m)	123
Trolley Bays	2

- Tarmac to access road
- Anthracite concrete block interlocking paving to parking areas - herringbone
- Anthracite concrete block interlocking paving to trolley bays and pedestrian routes - stretcher bond
- Concrete paving to footpaths
- Landscaped area



Proposed 1st Floor
1 : 500



SPACE ARCHITECTS

Project Lidl - Jesmond Gardens					
Drawing Title Site Plan					
Project No. 06979	Originator SPA	Volume 00	Level - Type - Role - Class - No. XX-DR-A-91-0003	Suitability S2	Revision 6
File Reference 06979-SPA-00-XX-DR-A-91-0003-S2-6				Scale at A3 1 : 500	

SUITABILITY REFERENCE (BS1192:2007): S0 = Work in Progress S1 = Shared - Fit for Coordination S2 = Shared - Fit for Information S3 = Shared - Fit for Internal Review and Comment S4 = Shared - Fit for Construction Approval D1 = Documentation - Fit for Costing D2 = Documentation - Fit for Tender/D3 = Documentation - Fit for Contractor Design D4 = Documentation - Fit for Manufacture/Procurement A = Documentation - Fit for Construction
B = Documentation - Fit for Construction with Comments C = Documentation - Comprehensive Revisions Needed AB = Archive - As Built / Final Construction Issue
REVISION REFERENCE (Deviation from BS1192:2007): Numeric = Pre-contract Alphabetic = Post-contract

This drawing is Copyright - Check all dimensions on site - Inform architect of any discrepancies - Work to figured dimensions only - Do not scale